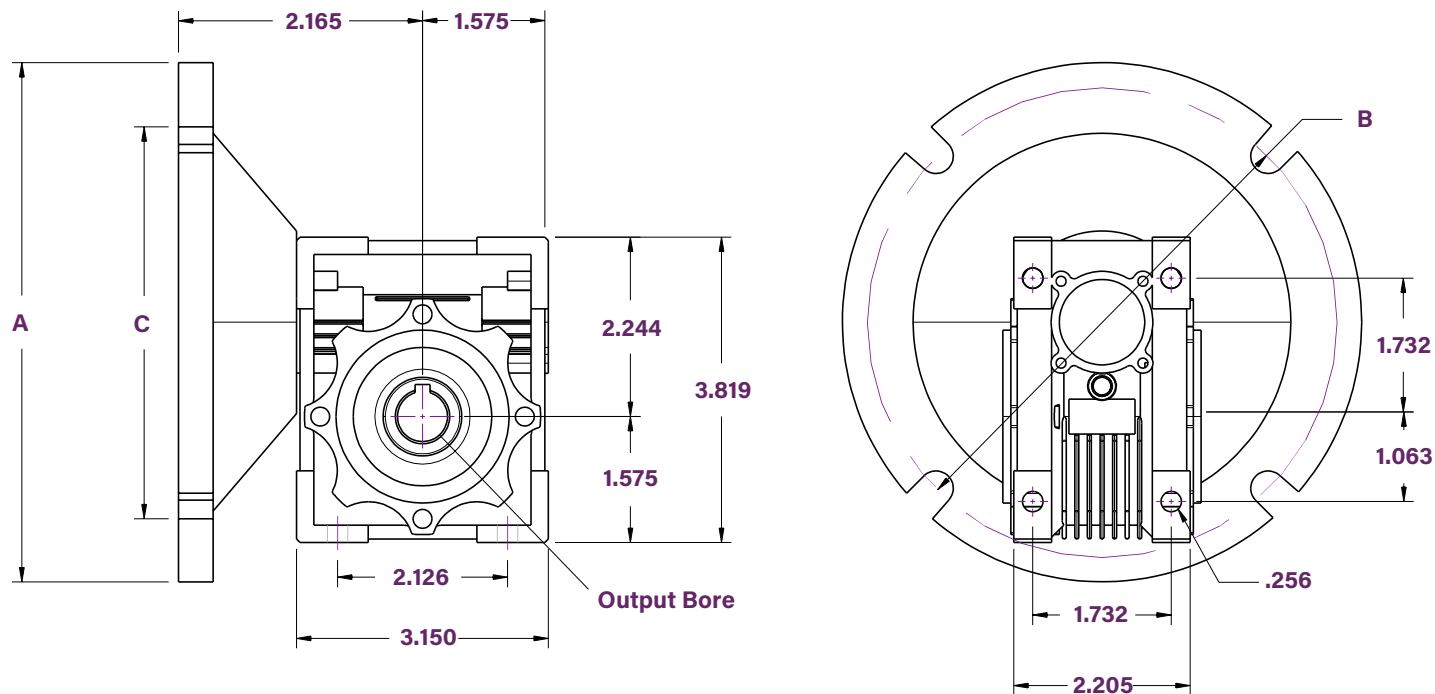


VMRV-30 Dimensions

Worm Gear Reducer

All dimensions listed in inches



Motor Options & Dimensions

NEMA Frame	Motor Shaft Dia.	A OD Flange	B Bolt Circle	C Pilot Bore
56C	0.625	6.50	5.88	4.50

Specifications

Center Distance	Weight* (lbs.)	Est. Oil Fill Amount (oz.)
1.181	2.74	1.50

Hollow Output Shaft

Output Bore	Output Keyway
0.625	3/16 x 3/32

Ordering Information

Series	Size	Ratio	NEMA Input
VMRV	—	30	—
		60	—
		56C	

Ratios

Nominal Ratios
5:1
7.5:1
10:1
15:1
20:1
25:1
30:1
40:1
50:1
60:1
100:1

*Reducer weights are approximate and can vary by several pounds depending on flange and ratio options

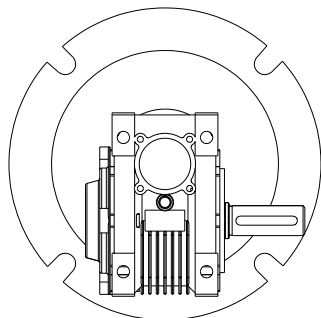
VMRV-30 Accessories

Worm Gear Reducer

All dimensions listed in inches

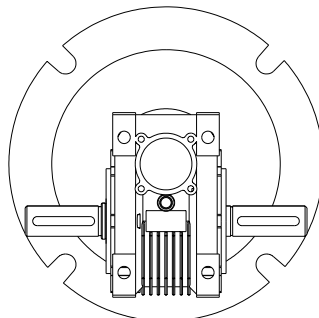


Solid Output Shaft Configurations

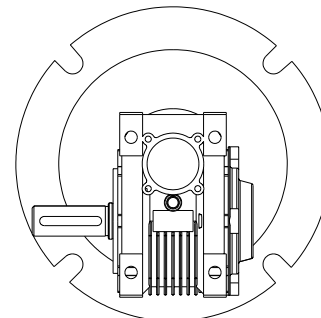


VMRV-30 with OSS & CVR

(Left hand orientation)



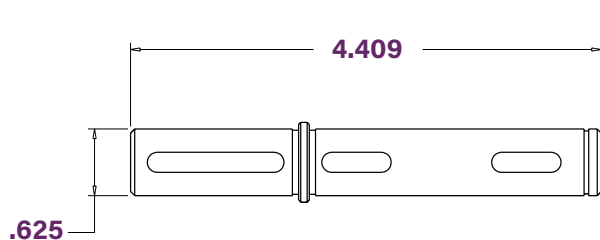
VMRV-30 with OSD



VMRV-30 with OSS & CVR

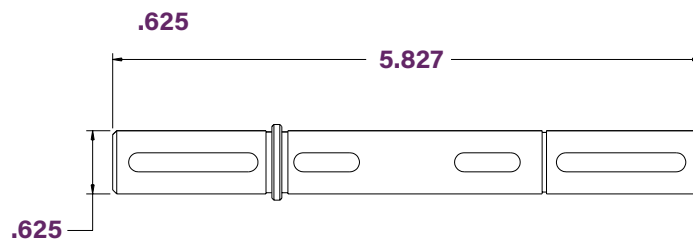
(Right hand orientation)

Available Accessories



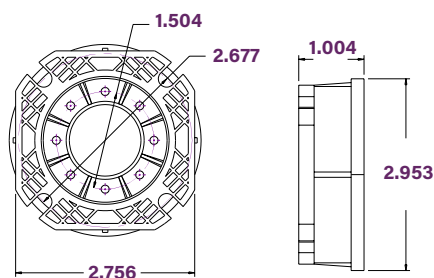
Single Output Shaft

VMRV-30 OSS



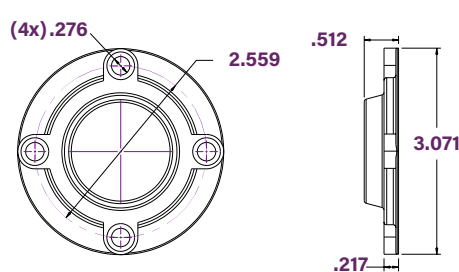
Double Output Shaft

VMRV-30 OSD



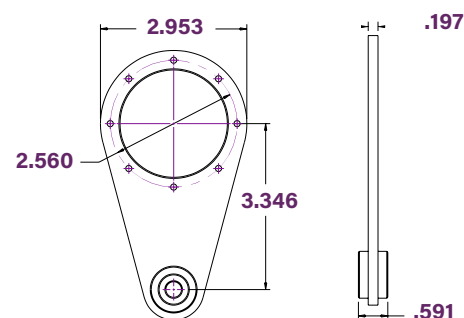
Output Flange

VMRV-30 OSF



Output Cover

VMRV-30 CVR



Torque Arm

VMRV-30 TA